



TreePennsylvania

# **BARE ROOT TREE GRANT PROGRAM**

**- FALL 2025 -**



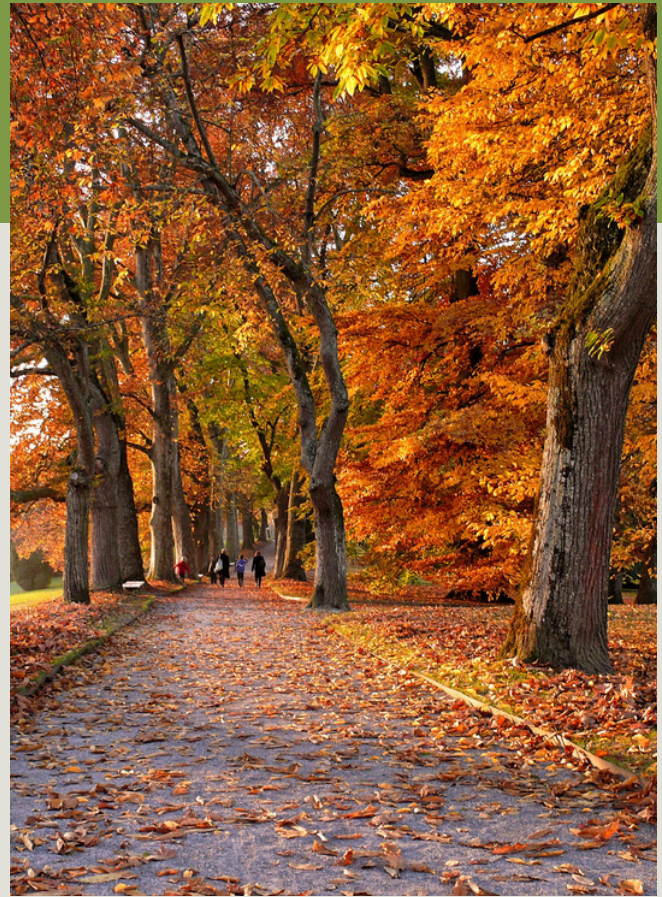
[grants@treepennsylvania.org](mailto:grants@treepennsylvania.org)  
[www.treepennsylvania.org](http://www.treepennsylvania.org)

**TREEPENNSYLVANIA**  
PA URBAN & COMMUNITY FORESTRY COUNCIL



# GRANT PROGRAM

TreePennsylvania is a private, non-profit organization dedicated to supporting urban and community forestry throughout Pennsylvania. The Bare Root Tree Grant program operates on a first come/first serve basis and provides two seasonal grant terms - Spring and Fall - with the goal of increasing tree canopy in Pennsylvania. This program provides 10 - 20 bare root trees (approx. 1.5-1.75" caliper), from a pre-selected species list, to awarded applicants for planting on publicly owned and publicly accessible land.



## BARE ROOT TREES

Many communities prefer expanding their urban and community tree canopy with bare root trees due to their lower cost, larger root mass, and ease in planting. Bare root trees are dug at the nursery and stored without soil around their roots. Plantings with bare root trees are a great opportunity to encourage volunteer participation in urban forestry as they are easy to move and plant. Trees provided by TreePennsylvania's grant program are typically 8-14 feet tall upon delivery. Please note, bare root trees must be planted within 5-7 days of receipt due to concern of roots drying out or tree damage if left exposed for extended periods of time.



# APPLICATION PROCESS

Interested applicants are encouraged to attend an [informational webinar](#) on May 12, 2025 to learn more about the program requirements. This is a first come/first serve grant program with a two-step application process and is funded through annual PA DCNR and USFS grants.

All applicants, new and returning, are required to submit a planting plan along with a preliminary application. Eligible applicants with qualifying planting plans will be invited to submit a full application.

All application materials will be available at [TreePennsylvania.org](https://TreePennsylvania.org)

## ELIGIBILITY

Please contact Jessica ([grants@treepennsylvania.org](mailto:grants@treepennsylvania.org)) with any questions about eligibility.

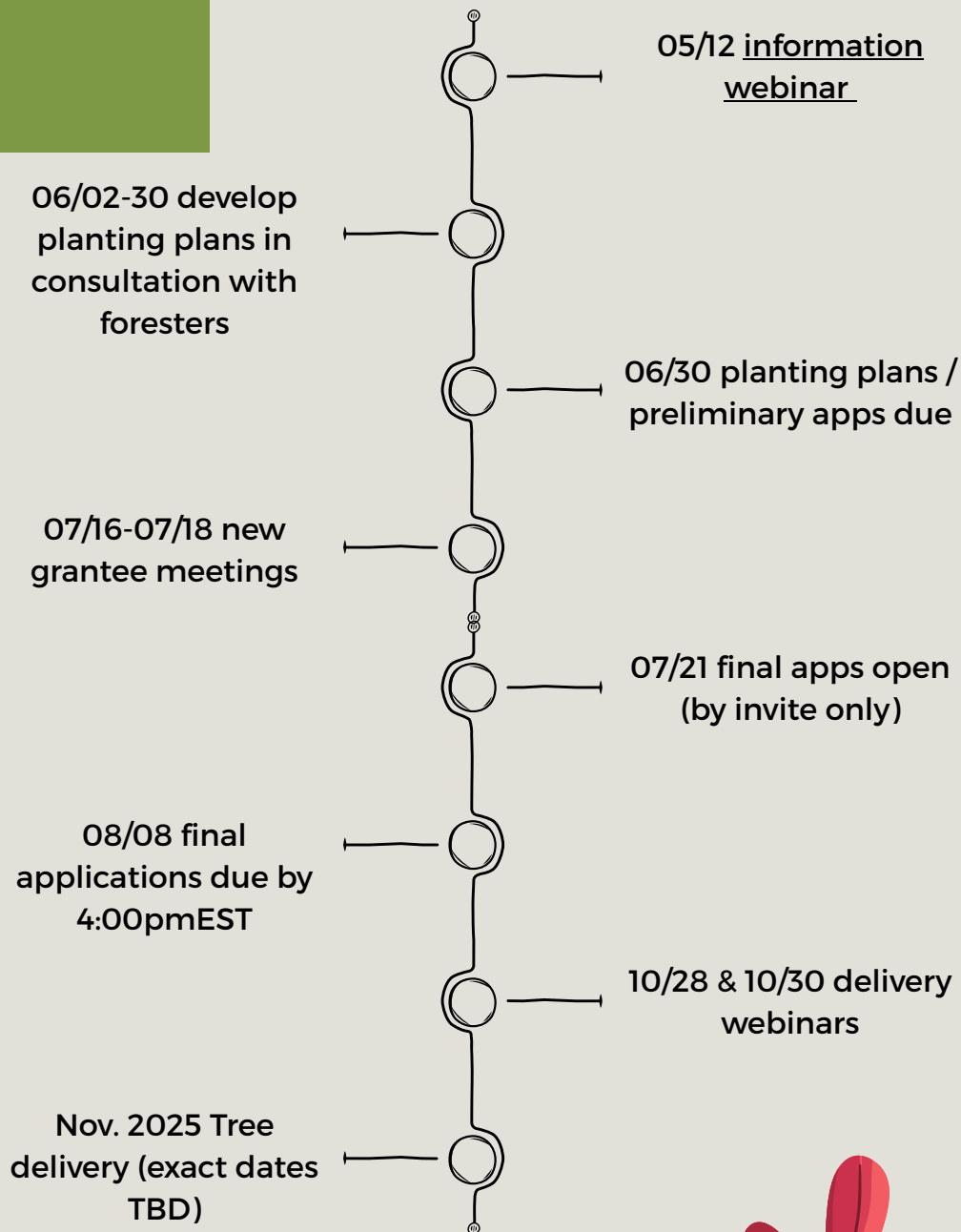
### Eligible :

- Commonwealth municipalities
- Non-profit agencies
- Previous grantees in good standing

### Ineligible :

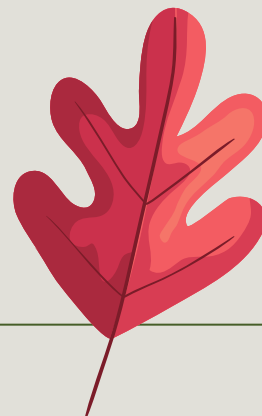
- Previous grantees in need of reparative technical assistance
- Private organizations including HOAs
- Private residents
- Representatives of government agencies
- Recipients of DCNR/C2P2 urban forestry funding
- Plantings on privately owned land

# FALL 2025 BARE ROOT TREE GRANT PROGRAM : TIMELINE



**TreePennsylvania**

BRT Fall 2025





# PLANTING PLANS

As mentioned, all grantees, new and returning, are required to submit a planting plan in conjunction with a preliminary application. **This is a change from previous grant terms.** Planting plans include detailed information about where grant-funded trees would be planted, site conditions, any necessary site prep (removal of invasive species or impervious surfaces), overhead obstructions, ideal species size, and post-planting maintenance. PA DCNR Service Foresters, Community Forestry Specialists, and PSU Extension Foresters provide applicants with assistance in developing planting plans. A variety of example planting plans are available on our website. New applicants are required to meet with a forester to develop a planting plan in person. Returning applicants may consult with a forester via email or phone and submit their planting plan to the TreePennsylvania Program Director directly.

Planting plans must be made in consultation with a PA DCNR Service Foresters, Community Forestry Specialists, or PSU Extension Forester and all planting plans AND preliminary applications must be submitted no later than June 30, 2025.



## SPECIES SELECTION

Grantees will select 10-20 bare root trees from a seasonally curated list of trees. With an emphasis on native trees, the species list provides a mix of medium to larger canopy trees; unfortunately, conifer trees are not available through this program. A copy of the Fall 2025 BRT Species List will be available on the [TreePennsylvania website](#) in July 2025.



# TREE DELIVERY

The Fall 2025 Bare Root Tree grant-funded trees will be delivered in early **November 2025**. The exact date(s) are determined by many factors and ultimately at the discretion of the nursery. Delivery dates will be shared with grantees as soon as possible.

Trees are delivered to regional community distribution hubs determined by the proximity of grantees. Every effort is made to coordinate sites which require no more than two (2) hours of travel time for grantees.

## GRANTEE REQUIREMENTS

Both new and returning grantees are required to add grant-funded trees to PA DCNR's [TreeKeepers online mapping tool](#). Technical assistance is available through DCNR staff.

New grantees must meet specific requirements including :

- in-person consultation with PA DCNR Service Forester/PSU Extension Forester (scheduled no later than June 16, 2025).
- attendance at October delivery, care, and maintenance webinar

Returning grantees will need to:

- submit a planting plan for review by PA DCNR Service Forester/PSU Extension Forester no later than June 16, 2025
- provide evidence of appropriate transportation, care, and maintenance but do not need to attend the webinar.



# CONTACT US

TreePennsylvania is a private, non-profit organization dedicated to supporting urban and community forestry throughout Pennsylvania.



Please contact us with any questions about TreePennsylvania or the Bare Root Tree Grant program.

Bernie Dincher, Board President  
Jessica Cavey, Program Director

[grants@treepennsylvania.org](mailto:grants@treepennsylvania.org) // 717-599-8650  
[treepennsylvania.org](http://treepennsylvania.org)

*published April 2025*

